



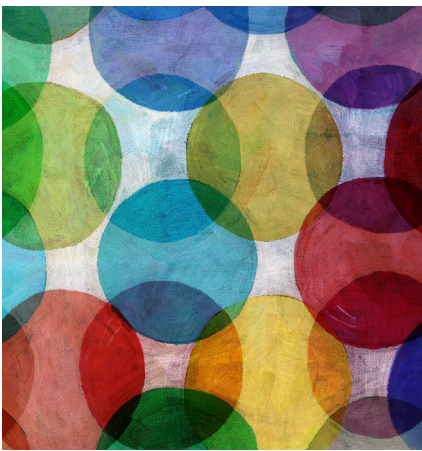
Australian
National
University

Linking research and policy: Working at the boundary

Thursday 7 February 2013 9am - 4.30pm

Dr Ryan Meyer Science Integration Fellow, California Ocean Science Trust

Canberra/Springbank Rooms JG Crawford Bldg 132, Lennox Crossing, ANU



Discussions about the need to improve the linkages between research and government in order to enhance public policy often focus on the 'gap' or 'chasm' between the two communities. But are things actually that bad? Do we need Chief Scientists in every Australian Government department – as in the UK – or something else? What institutions do we already have, and what do we need?

This workshop will address these questions, with a particular focus on 'boundary' players – institutions and individuals that work at the interface of research and policy, helping to broker and translate knowledge in relevant and useful ways.

In September 2012, the Australian Government released a report on *The Place of Science in Policy Development in the Public Service*. It states:

'A key finding of this project has been the importance of 'boundary players' in operating at the intersection point, and mediating between the science and policy worlds. Research suggests that boundary players

(individuals and institutions) can be very effective at bridging the gap between science and policy.'

The HC Coombs Policy Forum in Crawford School of Public Policy at the ANU is working in partnership with the Australian Government Department of Industry, Innovation, Science, Research and Tertiary Education to support the exchange of ideas and best practice about more effectively linking research and policy.

Speakers include:

- > **Professor Andrew Campbell** Charles Darwin University
- > **Professor Quentin Grafton** Bureau of Resources and Energy Economics
- > **Professor Alan Hayes** Australian Institute of Family Studies

The workshop will provide an opportunity to hear from an international expert on boundary organisations and for representatives from the Australian Government and research community to discuss how they approach the issue.

Key questions will include:

- > What boundary organisations already exist to support the linking of research with Australian Government policy-making? Are there gaps?
- > What do they actually do? Why does it matter?
- > What does success look like? How are they evaluated? Do incentives match objectives?
- > What are the impediments to success? What needs to happen for boundary players to operate more effectively into the future?

Presented by

HC Coombs Policy Forum
Crawford School of
Public Policy

Registration required

Registration crawford.anu.edu.au/events/content/more.php?id=8691

This workshop is free and open to the public

Enquiries E events.coombs.forum@anu.edu.au T 02 6125 7067

Further information crawford.anu.edu.au/hc-coombs

CRICOS# 00120C

This event is supported by the Australian National Institute of Public Policy and the HC Coombs Policy Forum with funding from the Australian Government under the 'Enhancing Public Policy Initiative'.

PUBLIC WORKSHOP



KEYNOTE SPEAKER



Dr Ryan Meyer

The study of boundary organisations: Lessons for policy and practice

Dr Ryan Meyer is Science Integration Fellow at the California Ocean Science Trust (OST), a boundary organisation focused on marine and coastal issues. Ryan was recently a Fulbright Scholar based at the University of Melbourne, studying federal investments in climate adaptation research. He earned a PhD with the Consortium for Science, Policy, and Outcomes at Arizona State University, and prior to that was a program manager at the Earth Institute at Columbia University.

DRAFT AGENDA

9am	Arrival/coffee
9.30am	Welcome and introduction Paul Harris Deputy Director, HC Coombs Policy Forum, Crawford School, ANU
9.45am	<i>Implementing the recommendations of the APS200 report</i> Katharine Campbell DIISRTE
10am	<i>The study of boundary organisations: Lessons for policy and practice</i> Ryan Meyer California Ocean Science Trust
11.00am	Morning tea
11.30am	<i>Are boundary organisations inherently vulnerable? Lessons from the life and death of Land and Water Australia</i> Andrew Campbell Charles Darwin University
12pm	<i>The establishment of the Bureau of Resources and Energy Economics</i> Quentin Grafton BREE
12.30pm	Discussion / Q&A
1pm	Lunch
2pm	<i>The role of knowledge brokering in achieving impact from CSIRO Flagships</i> Neil Lazarow Climate Adaptation National Research Flagship
2.30pm	<i>Research for social policy</i> Alan Hayes Australian Institute of Family Studies
3pm	Discussion / Q&A
3.15pm	Afternoon tea
3.30pm	Final discussion/wrap-up – facilitated by Ryan Meyer
4.30pm	Close